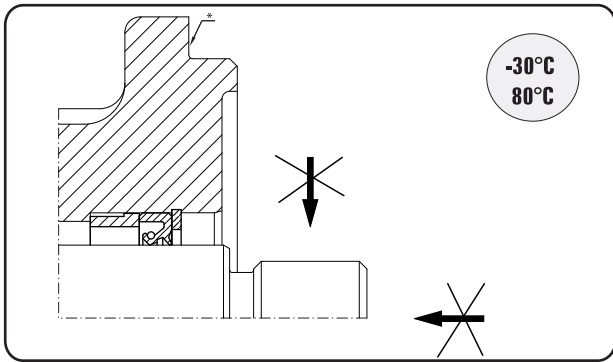


Model	2207	2208	2210	2213	2215	2216
Displacement [ccm/rev]	53,6	58,7	70,1	85,7	101,1	110,8
Rated pressure [MPa]	21	21	21	21	21	17
Max speed [rpm]	pumps 2700 motors 3000					
Max torque motors [Nm]	157	173	207	253	296	272

- Seal design
- Dimensions data
- Drive shaft
- Mounting flange
- Ports

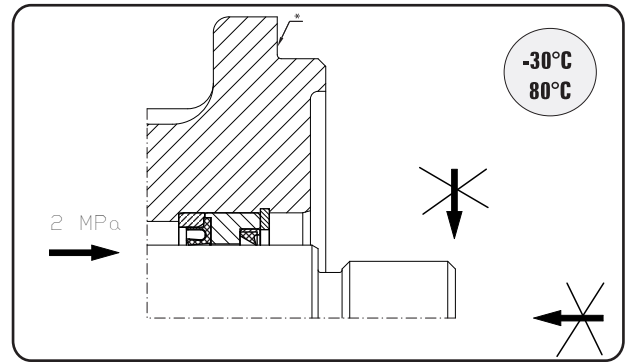
HOW TO ORDER

P-PUMP M-MOTOR	DESIGN LEVEL 1- without 2 or 3	SEAL DESIGN	BEARINGS roller - without plain - P	SIZE	DRIVE SHAFTS	FLANGE	PORTS	Rotation A- anticlockwise C- clockwise D- birotation
P		C	P	2207	C	2	B26	C
P M		A	roller	2207	B C AP Q	2 3 4 5	B25 B26	A C D
		C		2208				
		A2P		2210				
		A2PV		2213				
		C2P		2215				
		C2PV		2216				
E								



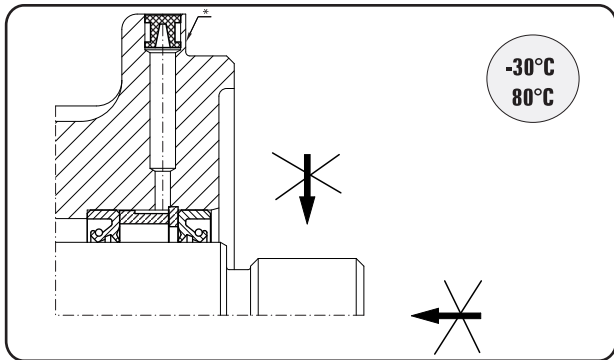
code A

Suitable for drives with limited radial load



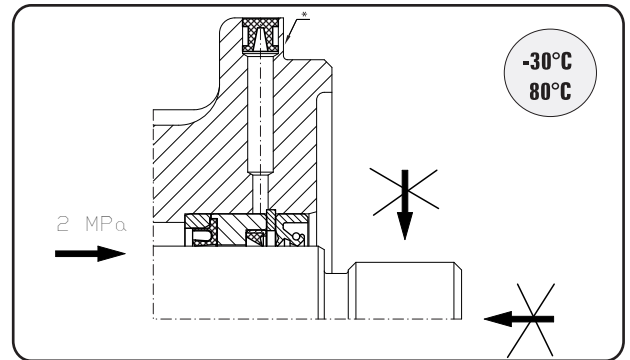
code A2P, A2PV

Options of high pressure shaft seal suitable for drives with limited radial load



code C

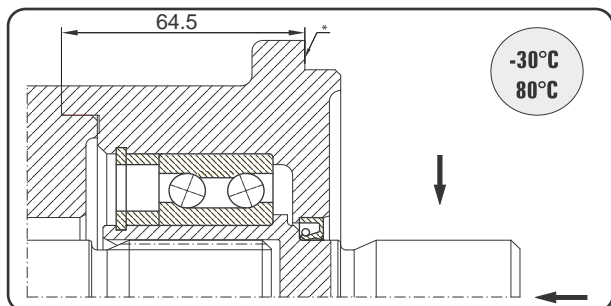
Visible-bleed drilling suitable for drives with no load for direct mounting on torque converters and gear boxes



code C2P, C2PV

Options of high pressure shaft seal suitable for drives with no load visible-bleed drilling

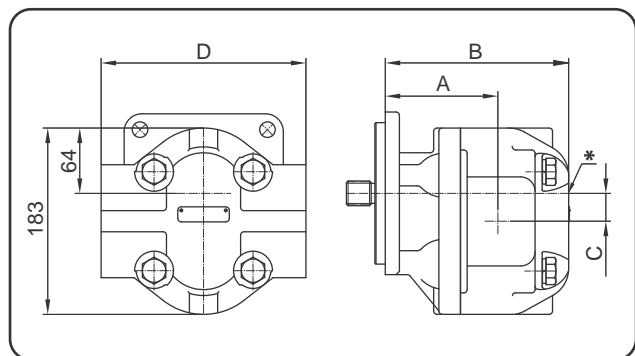
2P-bi-rotation no check valves with external drain.
2PV-bi-rotation with check valves.



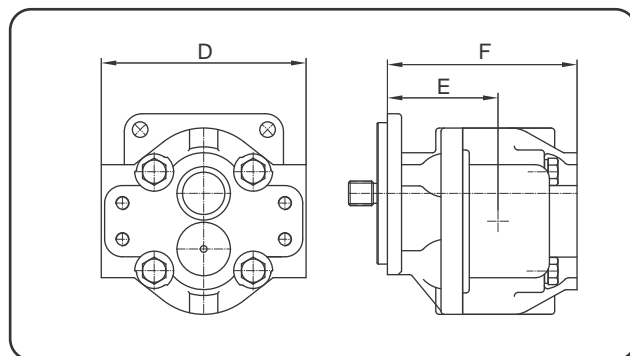
code E

Suitable for drives with heavy axial load and some radial on to drive shaft

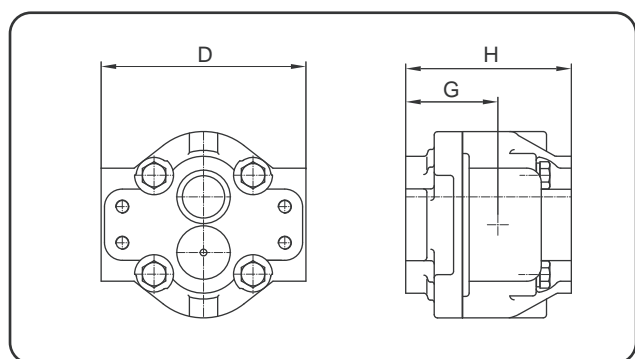
* standard flange mounting surface



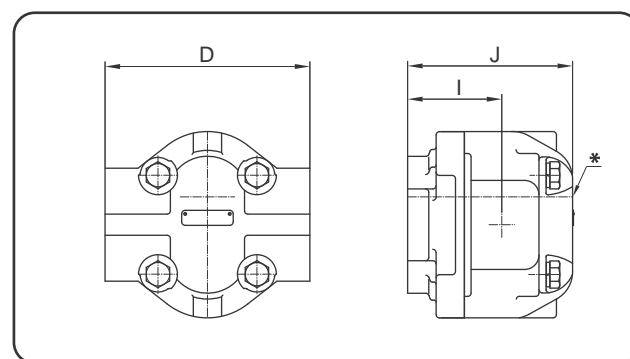
Single unit



Front unit



Intermediate unit

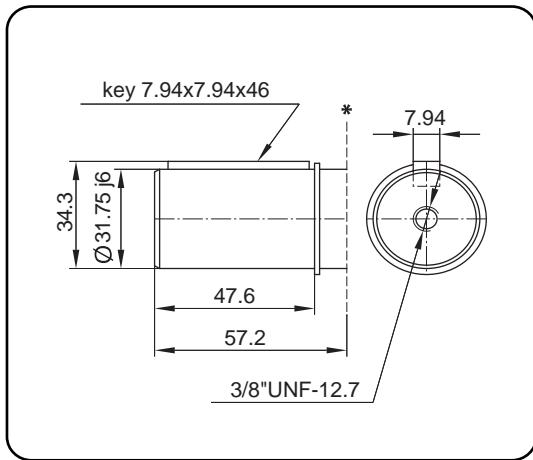


Rear unit

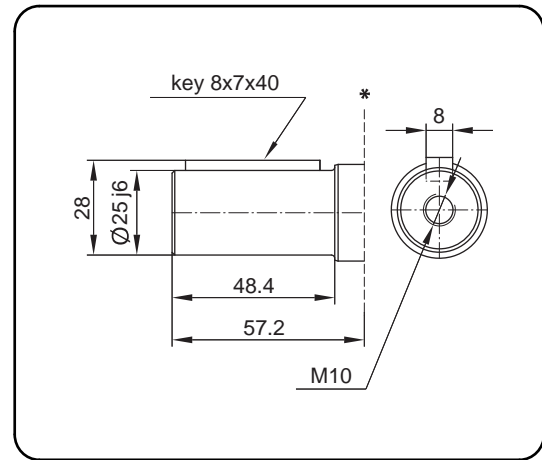
SIZE	Single unit				Front unit			Intermediate unit			Rear unit			
	A	B	C*	Weight [kg]	E	F	Weight [kg]	G	H	Weight [kg]	I	J	Weight [kg]	D
2208	109	170	27,5	22,3	109	178	23,8	97	167	22,2	97	159	20,0	187,3
2210	109	170	27,5	22,5	109	178	23,9	97	167	22,3	97	159	20,0	187,3
2213	116	176	27,5	23	116	184	24,3	105	173	22,4	105	165	21,0	187,3
2215	116	186	27,5	23,1	116	194	25,0	105	183	23,0	105	175	21,4	187,3
2216	116	186	27,5	23,4	116	194	25,0	105	183	23,1	105	175	21,5	187,3

* drain part for motors

SHAFTS WITH KEY

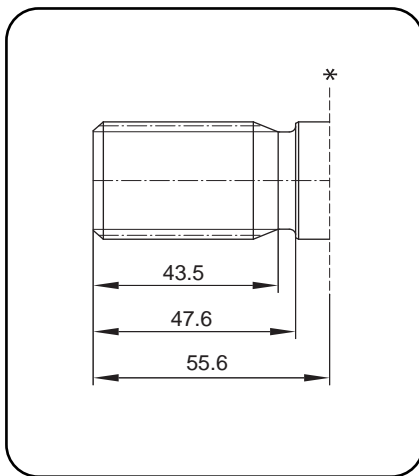


code G

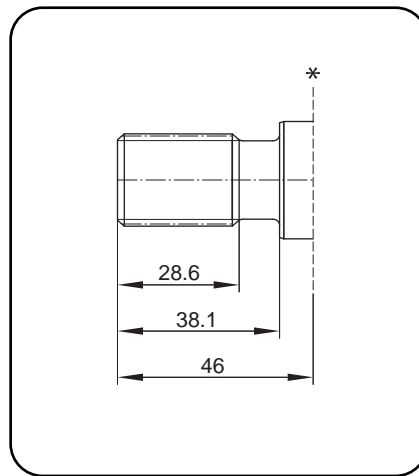


code AP

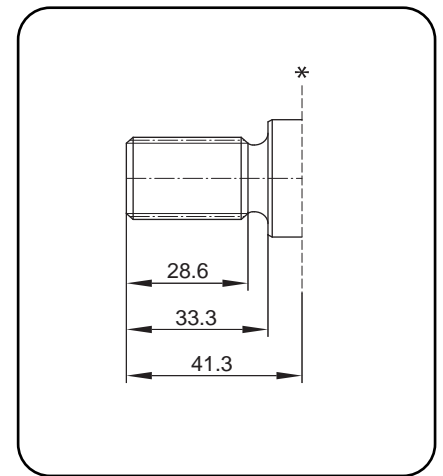
INVOLUTE SPLINE SHAFTS



code C



code Q

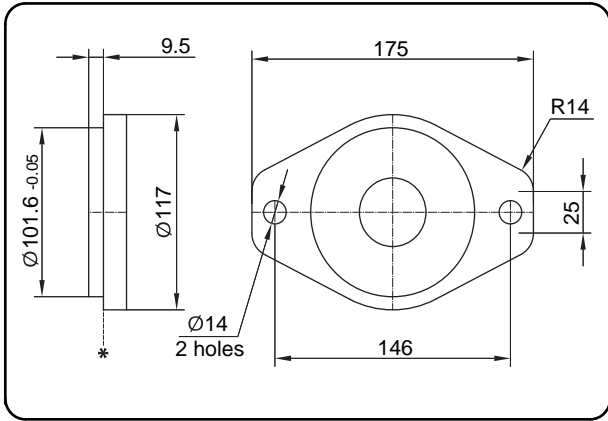


code B

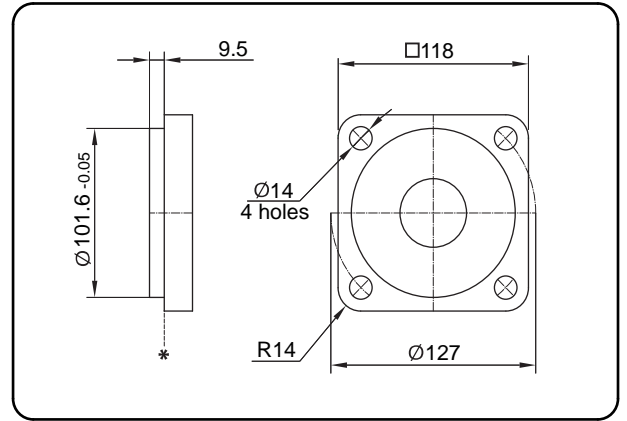
* standard flange mounting surface

	size	side fit	diametral pitch	pressure angle	number of teeth	major diameter
code C	SAE C	flat root	12/24	30°	14	31,20/ 31,12
	1 1/4"					
code Q	SAE BB	flat root	16/32	30°	15	24,97/ 24,87
	1"					
code B	SAE B	flat root	16/32	30°	13	21,79/ 21,66
	7/8"					

SAE B

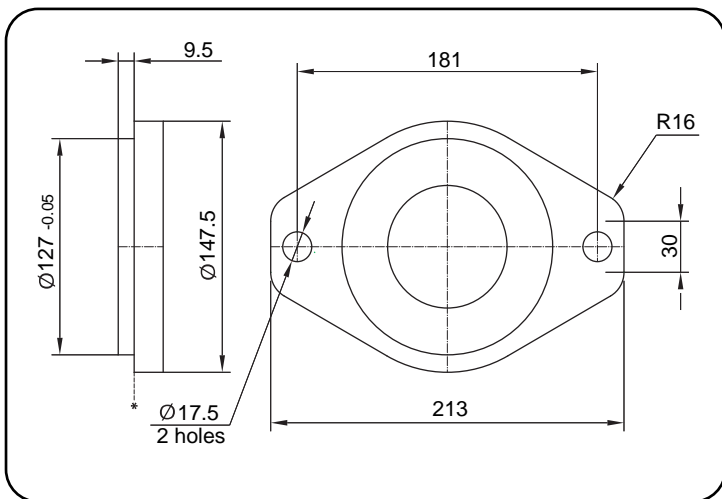


code 2

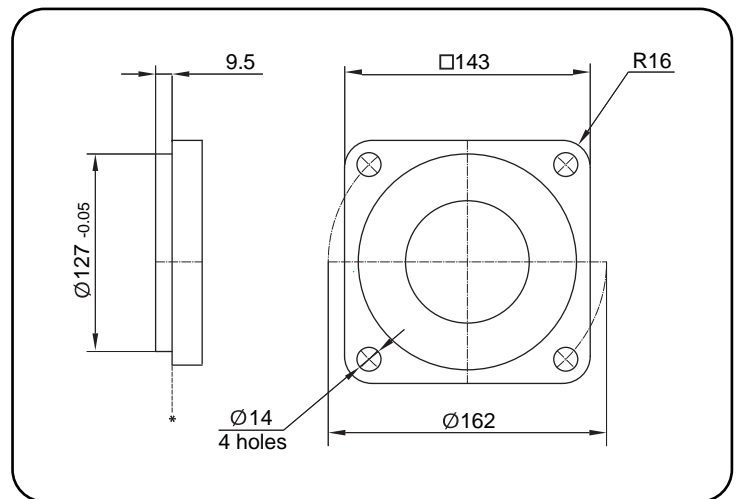


code 3

SAE C

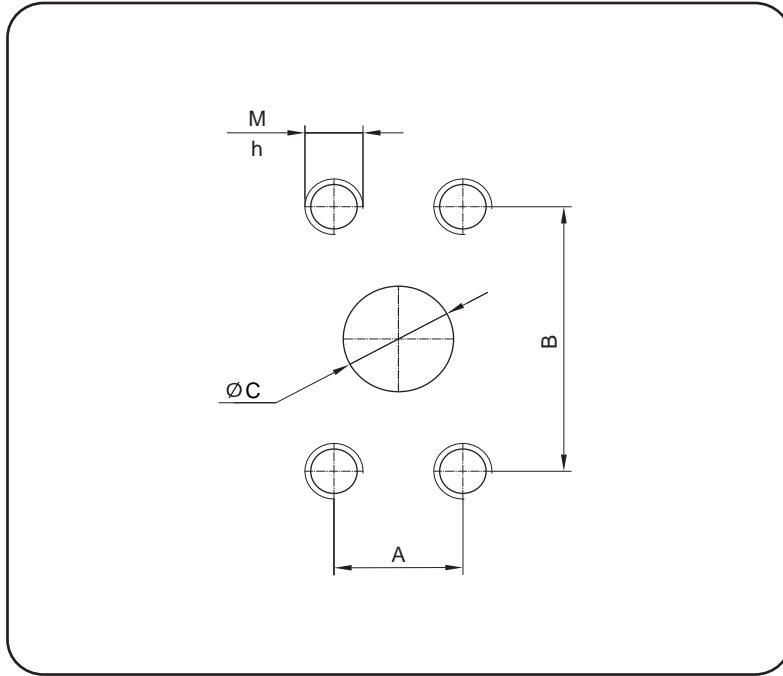


code 4



code 5

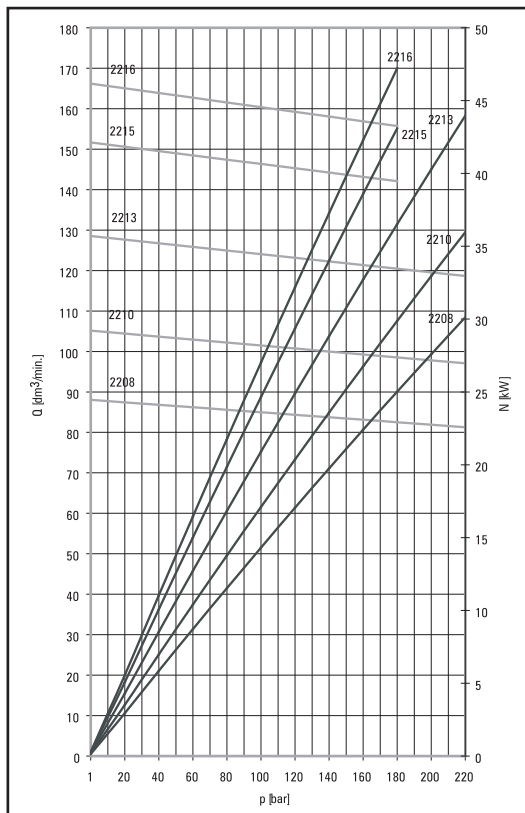
* standard flange mounting surface



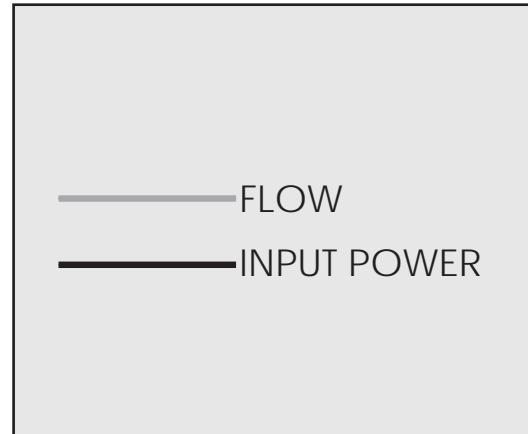
MOTORS							TYPE	PUMPS																
INLET/OUTLET								INLET					OUTLET											
B1		B1/B25			B25			B2		B2/B26			B26		B2		B2/B26			B26				
M	h	A	B	C	M	h		M	h	A	B	C	M	h	M	h	A	B	C	M	h			
3/8 UNC	28,6	26,2	52,4	25	M10	25	2208	1/2-13 UNC	28,6	35,7	69,8	38	M12	25	7/16-14 UNC	28,6	30,2	58,7	31	M10	25			
7/16 UNC		30,2	58,7	31			2210															2213	2215	2216
1/2-13 UNC		35,7	69,8	38			M12															2215	2216	
		42,9	77,8	50																				

GEAR PUMPS AND MOTORS HAMWORTHY SERIES

PUMP CHARACTERISTICS



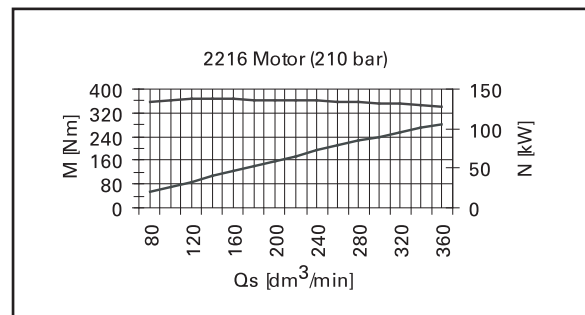
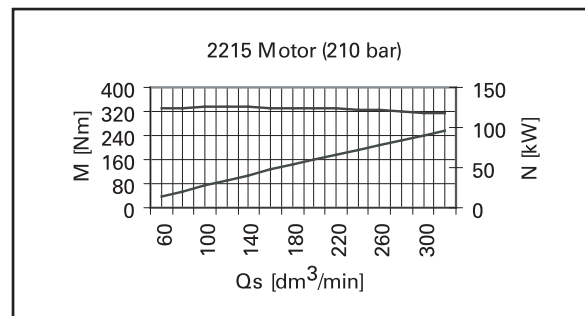
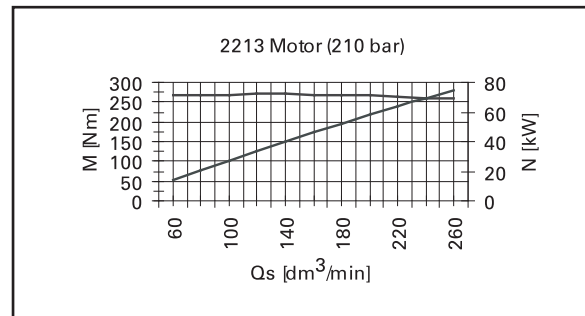
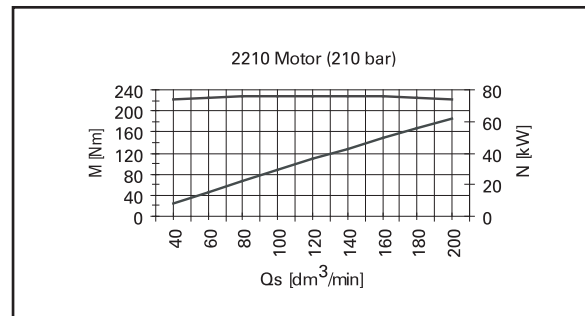
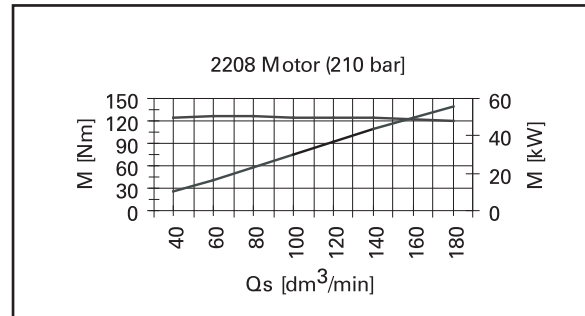
2200 SERIES



*Characteristic at shaft speed 1500 r.p.m.

GEAR PUMPS AND MOTORS HAMWORTHY SERIES

MOTOR CHARACTERISTICS



2200 SERIES



GEAR PUMPS AND MOTORS HAMWORTHY SERIES

DRIVE SHAFT

POWER LIMITATIONS

